



Mitsubishi Electric Europe  
Italian Branch



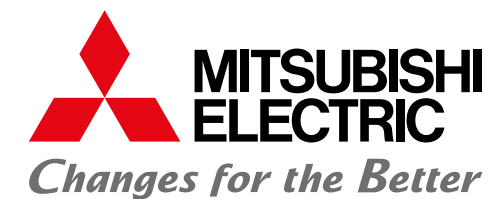


This company was founded  
with the aim of contributing to society  
through the production  
of electrical equipment.



***Hideo Takeda***

1<sup>st</sup> President (1921)



With more than 100 years of experience in the supply of hi-tech products, Mitsubishi Electric is world leader in the production, marketing, and sales of electrical and electronic equipment. **Mitsubishi Electric combines innovation with the typical traditions and values of Japanese culture, offering the best technologies to make the world in which we live more pleasant.** Mitsubishi Electric products and components can be used in many fields: IT and telecommunications, space research and satellite communications, consumer electronics, technology for industrial applications, energy, transport, and construction. The company is strongly committed to develop eco-compatible products and activities, and promote Corporate Social Responsibility programs.

**I N N O V A T I O N**



**C R E A T I V I T Y**



**Q U A L I T Y**





HISTORY AND PRESENCE  
IN THE WORLD

Corporate Social Responsibility,  
Integrity and Equity  
and Global Vision:  
our values  
leave their mark.

立業貿易  
處事光明  
所期奉公



WATCH THE VIDEO



MITSUBISHI ELECTRIC  
HEADQUARTER  
TOKYO

THE MITSUBISHI BRAND NAME  
(FROM THE JAPANESE “MITSU  
BISHI” WHICH MEANS “THREE  
DIAMONDS”) WAS ESTABLISHED  
IN 1870 BY THE SHIPPING  
COMPANY OF YATARO IWASAKI

- AFRICA
- AMERICA
- ASIA
- AUSTRALIA
- EUROPE

2020 marks the 150<sup>th</sup> year since Yataro Iwasaki founded what was to become the Mitsubishi Group. To commemorate this anniversary Mitsubishi Companies are renewing their commitment to the **three company principles established in 1870: Corporate Social Responsibility, Integrity and Equity, and Global Vision through business activities.** Mitsubishi Electric Corporation was established 50 years later, in 1921, and specialized in the development, production, and distribution of electrical and electronic equipment. In the 1930s Mitsubishi Electric started manufacturing, installing, and maintaining lifts and escalators, while also producing equipment for generating energy. By 1960 the company had stood out as one of the most innovative and diversified manufacturers of electrical equipment in Japan, and over the following years they focused increasing attention on the environmental impact of their production techniques, long before environmental problems became everyday issues. Over the following two decades the company began expanding abroad and at the same time became pioneer in the development of computers, advanced air conditioning systems, electronics for vehicles, solar powered satellites, and energy generation.

From 1980 until today, Mitsubishi Electric has introduced and reformulated innovative products and technologies to the advantage of society, industry, and individuals. Examples include the first spherical OLED screen, the first spiral escalator, the fastest lifts in the world, and the first aerial capable of transmitting a commercial announcement worldwide on the Internet. Today Mitsubishi Electric is committed to develop and application of new technologies based on artificial intelligence (AI). **The company benefits from the collaboration of over 149,000 employees around the world, with an overall turnover for the year ended March 31, 2024 of 5,257.9 billion yen (U.S.\$ 34.8 billion\*).** It has been present in Europe since 1969 with twenty branches operating in: Belgium, Czech Republic, France, Germany, Holland, Italy, Ireland, Norway, Poland, Portugal, Romania, Russia, Slovakia, Spain, South Africa, Sweden, United Kingdom, Turkey, Hungary, and UAE (United Arab Emirates).

The Italian branch was established in 1985 with three business units: **Air Conditioning** - for residential, commercial and industrial environments, including heating, dehumidification, and air treatment; **Factory Automation and Mechatronics** - equipment and systems for industrial automation; **Automotive** - systems and components for controlling car and vehicle mechanisms. It also provides support for sales of **Semiconductors**.



\* U.S. dollar amounts are translated from yen at the rate of ¥151 = U.S.\$1, the approximate rate on the Tokyo Foreign Exchange Market on March 31, 2024



## RESEARCH & DEVELOPMENT

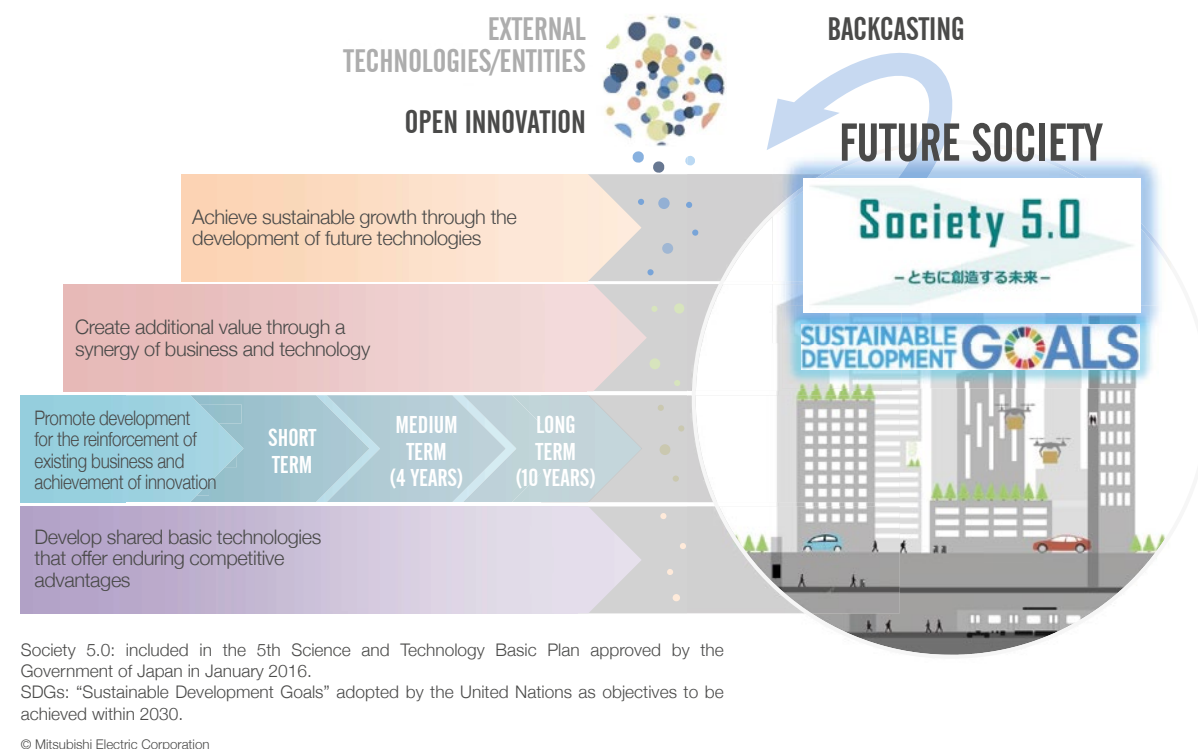
Dedicated today to defining tomorrow's technologies.



## RESEARCH AND DEVELOPMENT ARE THE LIFEBLOOD OF MITSUBISHI ELECTRIC. OUR RESEARCH CENTRES ARE CONSTANTLY ENERGIZED BY A LARGE CORE GROUP OF SPECIALIZED RESEARCHERS

Our technological achievements are focused on anticipating the continuously evolving needs of our customers within their environmental and social context.

As for the research of next generation technologies, the company can count on numerous resources available within a global network of **R&D centres in Japan, North America, and Europe**, in close collaboration with the academic world and customers. Every aspect of product development and production reflects market demands and contributes to improve society through innovation. **In Japan**, all Mitsubishi Electric's activities are based on cutting edge technologies supported by our **Research and Development Centre for Advanced Technologies**. The wide range of initiatives extends from shared basic technologies to development of new products, research and development activities to engender new business, and promoting the dynamic expansion of the brand. The **IT Research and Development Centre** generates new business with activities in a range of fields including information technology, multimedia intelligence systems, communications and microwave optoelectronic technologies. They are dedicated to researching technologies that consolidate the company as leaders in the sector and energize business. The **Industrial Design Centre** develops the diverse Mitsubishi Electric products for the aerospace, energy, building, industrial, public transport, communications/IT, household appliances sectors, and many more.

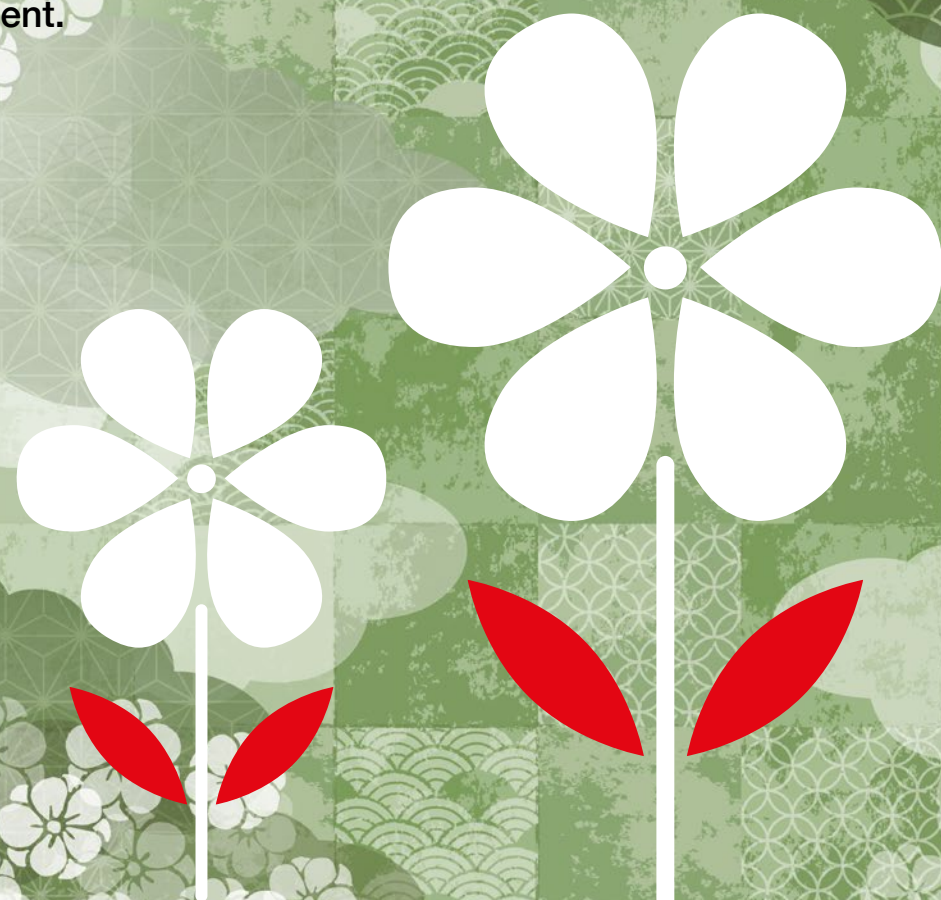


**In North America**, the MERL (Mitsubishi Electric Research Laboratories) is the company's North American research and development section conducting basic research for applications and advanced developments in the fields of electronics, digital communications, multimedia elaboration, data analysis, spatial information processing, mechatronics, and optimization technologies. **In Europe**, the MERCE (Mitsubishi Electric R&D Centre Europe) operates with sites in France and the United Kingdom conducting research and development activities in environmental, energy, and communications technologies. The global scope of Mitsubishi Electric's R&D is testified by the deposit of numerous patents, with the company placing first among Japanese firms and fourth globally in terms of international patent applications filed in 2023\*.

\*2023 data according to the Switzerland-based World Intellectual Property Organization (WIPO).



Mitsubishi Electric's  
environmental  
commitment.



## WE ARE STRONGLY COMMITTED TO CREATING ENVIRONMENTALLY FRIENDLY PRODUCTS AND ACTIVITIES

Mitsubishi Electric has traditionally been a responsible member of the communities in which it operates. Limiting our impact on the environment is therefore one of our top priorities, which is why our continuous efforts aim to ensure a better future through cutting-edge environmental technologies and manufacturing know-how.

**For this reason, since 2009 Mitsubishi Electric Italian branch is certified ISO 14001.** This certification issued by Det Norske Veritas, shows the concrete commitment to minimize the environmental impact of processes, products and services and confirms the reliability of the environmental management system applied. In July 2021, Mitsubishi Electric Corporation announced that has achieved the main goals of its just-completed **Environmental Vision 2021**, the Group's long-term environmental management strategy introduced by the company in 2007. By achieving the goals of this program, the Group has contributed to the realization of a more sustainable low-carbon world by promoting the recycling of resources along with respect and harmony with nature.



PROTECT THE AIR, LAND,  
AND WATER WITH OUR HEARTS  
AND TECHNOLOGIES TO SUSTAIN  
A **BETTER FUTURE** FOR ALL

The guiding principles of Environmental Vision 2021 are designed to make a major contribution to society through a variety of initiatives that will see their conclusion at the end of Fiscal Year21, Mitsubishi Electric's 100th anniversary year. More specifically, the following targets have been achieved:

- **Low carbon society:** The company achieved a 36% reduction in greenhouse gas (CO2) emissions from product use from FY2001 level, exceeding the original target of 30%. In terms of CO2 emissions from manufacturing operations, a 56% reduction from FY1991 level was achieved, significantly exceeding the original target of 30%.
- **Recycling-based company:** Final waste disposal rate was reduced in Japan to 0.02% (target: < 0.1%) while a rate of 0.15% (target: < 0.5%) was achieved overseas. By reducing the size and weight of its products, Mitsubishi Electric reduced resource use by an average of 43% from the FY2001 level, exceeding the target of 30%. In addition, water consumption per sales unit was reduced by 20% from the FY2011 level, double the initial target of 10% (1% per year).





In its new Environmental Sustainability Vision 2050, Mitsubishi Electric places environmental protection as a top priority and sets out an increase in initiatives aimed at this end. The Vision defines the future programme in terms of implementing key initiatives based, primarily, on the environmental statement: “Protecting air, land and water with heart and technology to sustain a better future fo all”.

In particular, the new Environmental Sustainability Vision 2050 sets an ambitious goal of reducing greenhouse gases throughout the value chain, aiming to achieve a **total reduction in CO<sub>2</sub> emissions by 2050**. As the global trend towards decarbonisation accelerates, Mitsubishi Electric Corporation has indeed announced that **will become a carbon neutral company by 2050**.

- A tangible commitment based on three action directives regarding environment:
- **Apply various technological resources across the vast range of sectors of activity** to mitigate a number of environmental problems including climate change, recycling of resources, and harmony with nature along the entire value chain.
  - **Face the challenge of developing company innovations for future generations:** the Mitsubishi Electric Group can count on significant internal and external resources, and when required these will be brought together to help resolve difficult problems in the development of new company technologies and innovations suited to future generations.
  - **Divulgate and share new values and lifestyles:** Mitsubishi Electric Group will actively promote dialogue, collaboration, and joint creation with numerous subjects and bodies external to the group, divulging and sharing new values and lifestyles that enable people to live better and in harmony with nature.



## SUSTAINABLE DEVELOPMENT GOALS

Mitsubishi Electric Group has established the main elements of its action plan by grouping priority environmental initiatives into two macro areas: “provide solutions to social challenges through our business” and “strengthen our business foundation to enable our sustainable growth”. The action plan is based on the principles of the SDG Goals, the 17 Sustainable Development Goals defined by the United Nations as a global strategy to promote global balance.

With the aim of achieving a strong and sustainable society, five new themes have been redefined. These include “realize a sustainable global environment”. Mitsubishi Electric has prioritised the response to climate change even more, targeting to reach zero greenhouse gas emission across the entire value chain by 2050.





CORPORATE SOCIAL RESPONSIBILITY

Our contribution to the community.



THERE IS SOMETHING TO WHICH WE PAY CONSTANT ATTENTION: THE PEOPLE AND THE ENVIRONMENT IN WHICH WE LIVE AND WORK

- ENVIRONMENT
- SUPPORT FOR THE COMMUNITY
- RESEARCH AND INNOVATION
- TRAINING

Mitsubishi Electric is actively involved in a wide range of philanthropic and voluntary initiatives in Japan and around the world. By supporting numerous initiatives and projects in America, Europe, and Asia, we aim to meet the social needs of the local communities of our sites, while taking into account the **7 values** that guide our activities: **trust, quality, technology, ethics and compliance, humanity, environment, society**. This translates into projects and initiatives with diverse associations in as many different sectors: protection of artistic and environmental heritage and museums; contributions to medical care and scientific research for the rehabilitation and integration of individuals with drug and alcohol addictions; initiatives supporting parenthood, children in difficulty and disabled and corporate volunteering initiatives for school and university instruction.

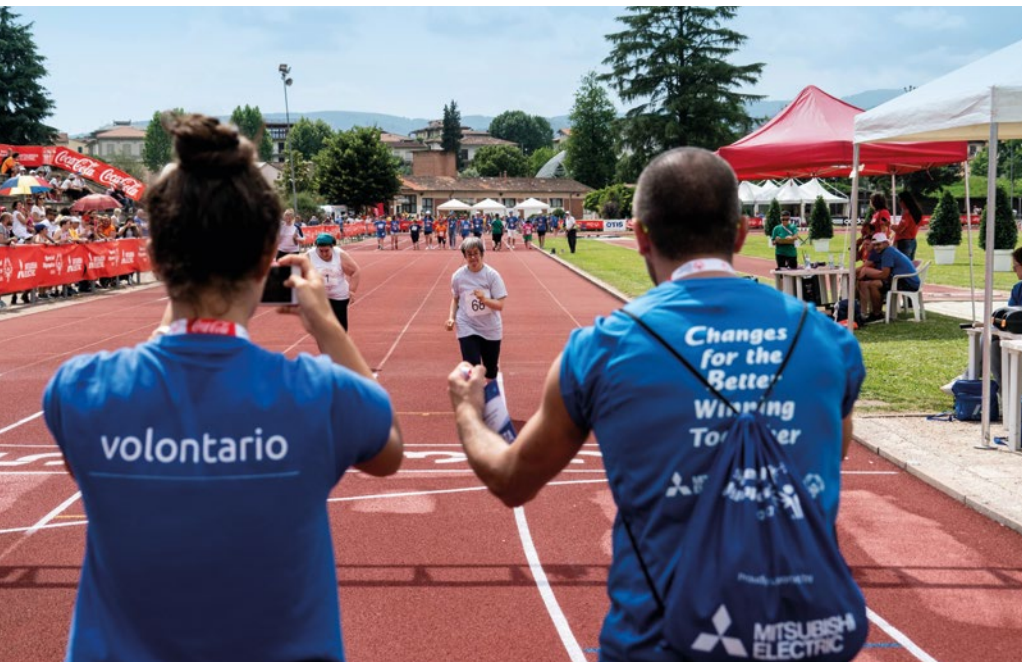
[responsabilitasociale.mitsubishielectric.it](https://responsabilitasociale.mitsubishielectric.it)



**ENVIRONMENT**  
For over ten years Mitsubishi Electric has been Corporate Golden Donors sponsoring FAI (Fondo per l'Ambiente Italiano), whose mission is protecting the beauty of the Italian territory and special locations, while also raising appreciation for minor cultural features that are easily overlooked. Every cultural location is our testimony and our mirror: knowing and valuing them means caring about ourselves and our lives.







OUR SUPPORT FOR THE “SPECIAL OLYMPICS” ALSO TAKES THE FORM OF PARTICIPATION BY COMPANY VOLUNTEERS IN THE EVENTS, OFFERING VALUABLE ASSISTANCE TO THE ATHLETES ON COMPETITION DAYS



TRAINING

Our Social Responsibility Program pays special attention to the training. We organize specific courses for customers and staff, but also for students and teachers in the high schools and universities we collaborate with. Our objective is to transfer practical and theoretical knowledge and develop the professionalism that will enable future experts to succeed in their work. We have numerous collaborations underway across Italy, including the Mentor ME free e-learning platform that has been created with the aim to provide young people with proper technical and professional tools to train themselves in the sectors of industrial automation and air conditioning.

RESPONSIBILITY



Special Olympics is an educational program that offers and organizes training and events for individuals with intellectual disabilities at all levels of ability. Since 2010 Mitsubishi Electric has been on the field alongside Special Olympics Italy to support numerous special initiatives and sports events.

Over the years, our commitment has led us to support the initiatives of numerous associations, including:

- **AIL** - The Italian Association against Leukaemia-Lymphoma and Myeloma.
- **AIMS** - An NPO operating for 40 years throughout Italy. Since 1998 it is partnered by FISM, the Italian Multiple Sclerosis Foundation, established to continue financing and promoting scientific research into this disease.
- **Dianova Onlus** - An NPO founded in Italy in 1984 for rehabilitation from drug addiction and intervention in correlated issues.
- **Sodalitas** - The reference organization in Italy for company sustainability, founded in 1995 on the initiative of Assolombarda.
- **Ai.Bi** - (Friends of Children) was established to provide a comprehensive response to the problems of abandoned children and single mothers in difficulty.
- **Fondazione TOG's** - Center offers rehabilitation programs for more than 100 children affected by nervous system lesions.
- **L'Abilità** - The new culture for disability in early infancy.
- **Comitato Maria Letizia Verga** - Doctors, health workers, parents, and volunteers working together to ensure the best chance of recovery and best quality of life in the field of childhood leukemia.

- **Brianza per il Cuore** - Is a local NPO that promotes and coordinates social and health initiatives to prevent and counter cardiovascular diseases.
- **PUP Foundation** - An Italian NPO founded in 2001 by the couple Javier and Paula Zanetti with the objective of offering concrete help to one of the poorest areas in Argentina.
- **Twins International** - An Association established in 2006 with the objective of improving the conditions of life of the most underprivileged communities in developing countries, with particular emphasis on children based project.
- **Legambiente** - Collaboration in tree planting projects in Italy.
- **CESVI** - Organization working worldwide to support the most vulnerable populations and to promote human rights.
- **AIRC** - AIRC Fondazione per la Ricerca sul Cancro has been supporting cancer research in Italy for more than 50 years.
- **Plastic Free** - Volunteer organization aimed at informing and raising awareness among as many people as possible for a plastic-free world.
- **Milano Musica** - Association established to raise awareness of 20<sup>th</sup>-century and contemporary music and contribute to the development of new forms of expression through various initiatives such as “Musica in Carcere” with Fondazione Monzino.



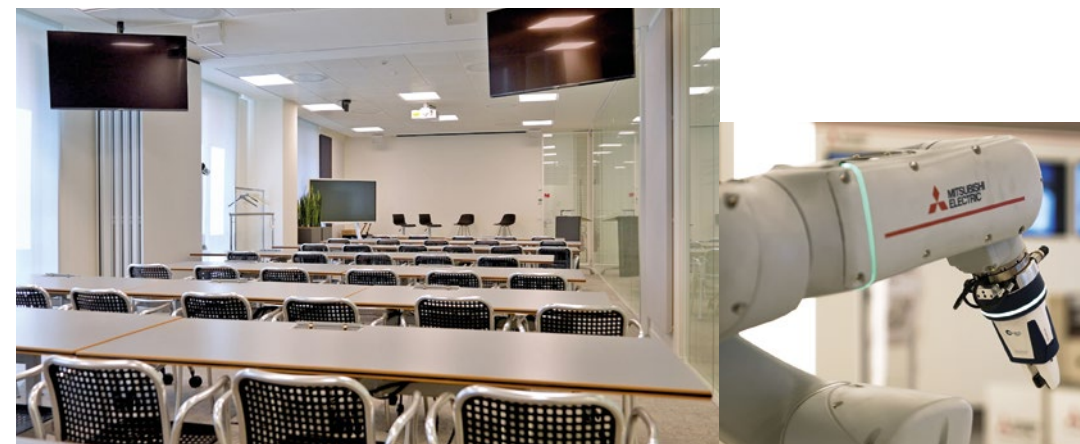
RESEARCH AND INNOVATION

One of Mitsubishi Electric's primary goals is to leverage its resources to make a meaningful contribution to society and enhance the quality of life globally by supporting communities that benefit from its advanced systems. Additionally, the company is deeply committed to scientific research, as demonstrated by its collaboration with AIRC, supporting scholarships for young Italian researchers dedicated to the fight against cancer.





Quality at the heart  
of every activity.



THE TRAINING CENTRES IN VIMERCATE AND ROME REPRESENT GENUINE CENTRES OF EXCELLENCE FOR IMPROVING KNOWLEDGE OF PRODUCTS, INCREASING PROFESSIONALISM, AND KEEPING CONSTANTLY UP TO DATE THROUGH THEORETICAL AND PRACTICAL TRAINING COURSES



## “CHANGES FOR THE BETTER”, REPRESENTS THE COMPANY’S ONGOING DEDICATION TO INNOVATION, CREATIVITY, AND IMPROVEMENT OF TECHNOLOGIES AND SERVICES

[it.mitsubishielectric.com](http://it.mitsubishielectric.com)



Quality starts from products and extends to innovative services dedicated to pre- and after-sales for customers, partners, and distribution networks through all stages of interaction with the company. Another primary component of quality are the human resources that Mitsubishi Electric promotes in **targeted training courses, both managerial and technical**, with the aim to improving and extending the skills and professionalism of their employees. Mitsubishi Electric also gets in contact with customers, partners, and a wider public through their network of external agencies and installation technicians, who mostly work exclusively for the company within their assigned territories. The company systematically organizes training courses in order to guarantee a high standard of service and professionalism.

At the headquarters in Vimercate there is a **500 sqm showroom**, a real **hub of technological excellence** with its many sophisticated solutions displayed within Air Conditioning, Industrial Automation, Automotive and Semiconductors sectors.

The showroom, located on the ground floor of the building and equipped with **many training rooms**, is also a venue for the organization of **training courses** dedicated to customers and to technical institutes and universities students.

This area includes the **Climatization Training Centre**, both a



practical and theoretical training center in the field of cooling, heating and air purification and the **Automation & Mechatronics District**, a high-tech area that offers visitors an overview of advanced solutions in the field of industrial and process automation and in the field of numerical control.

February 2017 also saw the inauguration of the Air Conditioning Training Centre in Rome.

The Italian Branch includes business units: **Air Conditioning, Industrial Automation and Mechatronics, and Automotive**. Support is also provided for the sales of **Semiconductors**.

The Italian Branch is also responsible for the sales of specific product lines in numerous states in the **Mediterranean area, Middle East, and continental Africa**. It also handles with the marketing of air conditioning products through the **Romanian Branch** established in 2018 and the **Greek Branch** opened in 2020.

Mitsubishi Electric Italian Branch is based in **Vimercate** with sales offices in **Padua, Pavia, Rome, Rosà, and Turin**.





# AIR CONDITIONING

New horizons  
in ambient comfort,  
new technologies  
that look to the future.

**MITSUBISHI ELECTRIC AIR  
CONDITIONING DIVISION:  
STATE-OF-ART TECHNOLOGY,  
HIGH ENERGY EFFICIENCY,  
QUALITY, RELIABILITY, QUIETNESS,  
AND ENVIRONMENTAL PROTECTION**



[climatizzazione.mitsubishielectric.it](http://climatizzazione.mitsubishielectric.it)



Mitsubishi Electric is committed to creating new values for a sustainable future for 2050, a programme already underway for some time and through constant investment in Research & Development is now reflected in every product and solution that our Japanese company creates.

The Corporate Message: **“Protect the air, earth, and water with sentiment and technology to create a better future for everyone”** establishes guidelines for all Mitsubishi Electric Air Conditioning Division initiatives and projects. These emerge in each individual installation, with the aim of guaranteeing maximum utility in every environment, while at the same time reducing energy consumption, running costs, and CO<sub>2</sub> emissions.

**Innovative solutions for energy savings and the use of renewable energy are priority targets** for Mitsubishi Electric.

With the acquisition in 2015 of the Climaveneta and RC brands, specialized in hydronic air conditioning systems and IT cooling, they have extended and enhanced their range for air conditioning, heating, dehumidification, and air treatment.

Maximum efficiency and high yield performance are the unique characteristics of Mitsubishi Electric solutions ranging from innovative hydronic heat pumps for heating, cooling, and hot sanitary water production, to control and monitor systems, from air conditioning for the residential, tertiary, and commercial sectors, to a complete range of solutions for air treatment and dehumidification, multifunction units, chillers, and air conditioning for datacenter cooling.

In addition to their outstanding products, Mitsubishi Electric Air Conditioning are also **ideal partners**, always placing customers centre stage, whether these are final users or professionals, and providing top class services to satisfy their needs at all times.

This is partly thanks to constant efforts to update our **training provisions** at the Training Centers in Vimercate and Rome and an extensive network of Authorized Technical Centers.

A fully updated course catalogue and new dedicated Web portal, together with diversified forms of participation, make training a distinguishing feature of this Division. Mitsubishi Electric's new training modules are designed in response to the constant evolution of professionals' needs, diversified by operation areas. The modules offer functional and applicational instruction for comprehensive professional training.

Mitsubishi Electric Air Conditioning Division expert and qualified professionals accompany customers from initial consulting all the way to after-sales product support throughout Italy.



KIRIGAMINE  
Style



MSZ-LN - RESIDENTIAL LINE INTERNAL UNIT



SUZ-SWM - ECODAN RESIDENTIAL HEAT PUMP



PURY-P YNW - VRF CITY MULTI EXTERNAL HEAT RECOVERY UNIT



I-FX-Q2-G05 - MULTIFUNCTION UNIT WITH SCREW COMPRESSOR INVERTER





# FACTORY AUTOMATION

Experts in automation  
for more than 100 years.

WATCH THE VIDEO

## TECHNOLOGICAL INNOVATION, APPLICATION EXPERTISE AND A CONSULTING-CENTRED APPROACH ARE THE SOUL OF THE FACTORY AUTOMATION DIVISION

SMART MANUFACTURING

PROCESS AUTOMATION

MACHINE TOOLS

AUTOMATION SOLUTION PROVIDER

TECHNICAL SUPPORT  
AND APPLICATION KNOW-HOW

SPECIALIZED TRAINING

[it.mitsubishielectric.com/fa](http://it.mitsubishielectric.com/fa)

YouTube

in

With more than 100 years of experience in the supply of high-tech products, Mitsubishi Electric is **world leaders in the field of industrial automation, processes, and numeric control**. Over the years it has consolidated unique competence in all types of application, with a complete offer extending from individual products to integrated global solutions. Mitsubishi Electric has various dedicated solutions and well established know-how to **support all companies in the optimization of their automation processes**.

It offers transparency and true integration between all components including PLC (programmable logic controllers), servo and motion controls, robots, inverters, CNC (computerised numerical controllers), and HMI (human-machine interface) to guarantee maximum productivity, reliability, and efficiency.

Alongside the Industrial Automation solutions there are process solutions, from engineering tools and SCADA systems for supervision and control to smart maintenance solutions, as well as EDGE solutions with analytics and artificial intelligence functions.

Finally, we offer a wide range of electromechanical products for low and medium voltage applications.

What makes Mitsubishi Electric unique is that every individual product, including the internal components, is designed, developed, and produced by Mitsubishi Electric itself. **This guarantees high quality, reliability, and integration between the different products, enhancing performance in all applications.**

With its excellent technical and after sales support, the Factory Automation Division of the Italian Branch acts as a "Factory Automation Centre". This is part of a world network of 31 centres of excellence, providing customers in the South EMEA area, for which the Italian Division is responsible, with a reference centre for activities linked to system options, technical consulting, and training in Mitsubishi Electric solutions.

Inspired by the motto "Changes for the Better", the Factory Automation Division focus everything on quality, providing innovative products and services for customers, partners, and distribution networks, improved employment of human resources, and specific training programmes. An extremely high-tech area is available for training, the **Automation & Mechatronics District**, which offers visitors a panorama of advanced and fully integrated solutions in industrial automation, processes, and numerical control.

This area also hosts an extensive **training project** called "**AcadeMy**", offering highly technical content presented by professionals with extensive experience in the sector. The project offers specialized training not only for customers but also for high school and university students from technological faculties.



PLC/DCS/SCADA



ANTHROPOMORPHIC ROBOTS, COLLABORATIVE AND SCARA



SERVO & MOTION



INVERTER/LVS



NUMERICAL CONTROLLERS



## AUTOMOTIVE

State-of-art technology to ensure comfort and safety in the full respect of the environment.



LEARN MORE

1

2

WE CREATE INNOVATIVE, CONSTANTLY EVOLVING SOLUTIONS THAT TRANSFORM A PASSION FOR DRIVING INTO AN INCREASINGLY SAFER, MORE ENJOYABLE AND COMFORTABLE EXPERIENCE

[automotive.mitsubishielectric.it](http://automotive.mitsubishielectric.it)



The Automotive Division of Mitsubishi Electric produces the **best state-of-art technologies for equipping new generation motor vehicles.**

Mitsubishi Electric supplies high quality electrical and electronic systems and components for device control on cars, commercial and other vehicles, as OEM (Original Equipment Manufacturers).

**Mitsubishi Electric's advanced motor vehicle components are used by the leading car and motorbike manufacturers in Italy, and many more.**

Among the main products and applications, there are the electric motors and inverters for hybrid and electric vehicles, valves for regulating gas pollutant emissions, encrypted electronic keys, engine control units (ECU), alternators, starter motors, navigation systems, car audio, and audio/video devices for on-board entertainment. Our objective is to improve both functionality and performance.



The vast range of Mitsubishi Electric vehicle components guarantee comfort and safety with full respect for the natural environment. As a result, many of our components are used in the production of hybrid and new generation vehicles.

### Electrical Components

Each Mitsubishi Electric vehicle component is meticulously designed to provide superior performance, while reducing weight and size to a minimum. In addition to improving the reliability and performance of the vehicles, these products are realized in full compliance with environmental standards, helping to improve overall efficiency.

### Electronic Components

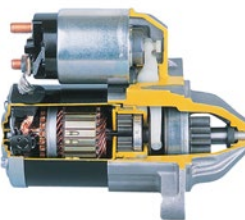
Mitsubishi Electric produces a large variety of power control devices and systems for new generation vehicles, including electrical control units, electrical power steering, millimetre wave radar, and other electromechanical components for cars. All these components are designed taking both safety and environmental sustainability into account.

### Multimedia Systems

Mitsubishi Electric integrates the latest novelties in car navigation systems, electronic road toll control, and digital audio/video systems, providing entertainment and information platforms that have become benchmarks for on-board "infotainment" fans.



ALTERNATOR



STARTER MOTOR



ELECTRONIC ENGINE CONTROL UNIT



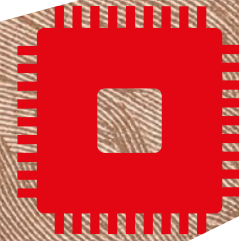
SATELLITE NAVIGATOR





# SEMICONDUCTORS

Technology for a better life quality, technology for a protected environment.



IT WOULD BE IMPOSSIBLE TO SUSTAIN OUR CURRENT LIFESTYLES WITHOUT THE HELP OF SEMICONDUCTORS: THEY PLAY A KEY ROLE IN ENERGY PRODUCTION, DATA TRANSMISSION, AND THE COUNTLESS OTHER WAYS IN WHICH ELECTRONICS PLAY A PART IN OUR EVERYDAY LIVES

[semiconduttori.mitsubishielectric.it](http://semiconduttori.mitsubishielectric.it)



**Mitsubishi Electric is leading operator in the semiconductors sector.** Our high frequency transistors and modules are used in mobile communication systems, Radio-TV broadcasting systems, and satellite communications.

High frequency semiconductors guarantee accurate transmission of satellite signals. In the optoelectronics sector, laser diodes and receivers transform electrical impulses into optical signals and vice versa for the transmission of data, images, and voice through optical fibre cables. High power laser diodes are used in diverse industrial and medical applications, like ophthalmology to correct or treat vision, in industrial fields for accurate measurement of distances, and for the projection of images.

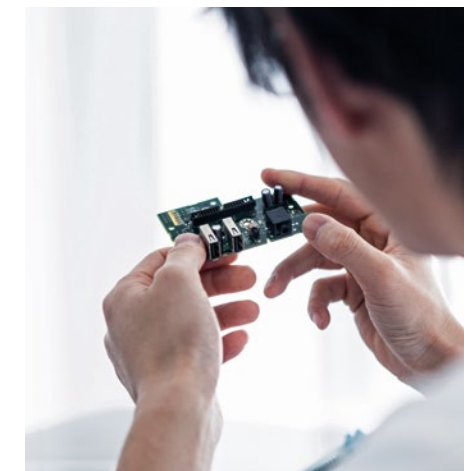
**Mitsubishi Electric has matured over 40 years of experience in the production of power semiconductors.**

As the first company in the world to have achieved full mastery of all the necessary technologies, we developed the Intelligent Power Module (IPM) concept and we are leaders in this sector as well as in IGBT (Insulate Gate Bipolar Transistor) technology.

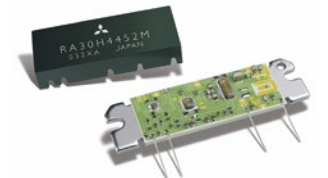
These skills allow us to supply modules adaptable to different fields of application, like engine control, railways, or the production of renewable energy. Power semiconductors have also made it possible to develop wind and solar power.

They transform continuous current into alternating current, which can then be channelled into the power grid.

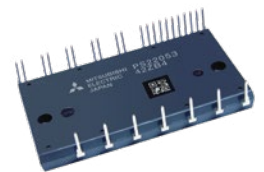
Mitsubishi Electric semiconductors ensure maximum efficiency and reduce energy consumption. Our development of innovative solutions actively contributes to the growing need to safeguard the environment, directly influencing the quality of life of people. This is also why we exclude the use of toxic substances like lead from our production lines.



HVIGBT POWER DEVICES



HIGH FREQUENCY DEVICES



POWER DEVICES



OPTOELECTRONIC DEVICES



## OUR SITES IN ITALY



### ITALIAN MAIN OFFICE

**Mitsubishi Electric Europe B.V.**  
**Vimercate**  
 Campus Energy Park  
 Via Energy Park 14 - 20871 Vimercate (MB)  
 Tel: 039.60531

### COMMERCIAL OFFICES

**Padua**  
 Via Savelli, 24 - 35129 Padova (PD) - Tel. 039.60531

**Pavia**  
 Via Roma, 7 - 27010 Valle Salimbene (PV) - Tel. 039.60531

**Rome**  
 Viale Luca Gaurico, 9/11 - 00143 Roma (RM) - Tel. 039.60531

**Rosà**  
 Via Capitano Alessio, 181 - 36027 Rosà (VI) - Tel. 039.60531

**Turin**  
 C.so Svizzera, 185 - 10149 Torino (TO) - Tel. 039.60531

### ROMANIAN OFFICE

**Mitsubishi Electric Europe B.V.**  
**Bucharest**  
 Str. Tudor Vladimirescu nr 22 - Sector 5 București  
 România  
 Tel. +40 312290840

### GREEK OFFICE

**Mitsubishi Electric Europe B.V.**  
**Athens**  
 3 Konitsis Street, Maroussi, 151 25, Attica, Greece  
 Email: reception.athens@gr.mee.com



**Air Conditioning Training Centre**  
 Campus Energy Park  
 Via Energy Park 14 - 20871 Vimercate (MB)  
 Tel: 039.60531

**Factory Automation Academy**  
 Campus Energy Park  
 Via Energy Park 14 - 20871 Vimercate (MB)  
 Tel: 039.60531

**Air Conditioning Training Centre**  
 Viale Luca Gaurico 9/11 - 00143 Rome (RM)  
 Tel. 039.60531







MITSUBISHI ELECTRIC EUROPE B.V.  
Italian Branch

[it.mitsubishielectric.com](http://it.mitsubishielectric.com)

OH-OTT24-MEUIT.PROF1\_DIGITAL\_ENG

Mitsubishi Electric reserve the right to modify the information  
in the present document at any time and without prior warning.

*All copying, even partial, is forbidden.*